

# EUROCAGE External Security Cage

Eurocage is a comprehensive range of multi-purpose mesh storage cages complete with mesh roofs, suitable for indoor or outdoor use. These cages are suitable for most applications where security is required to combat theft or protect equipment.

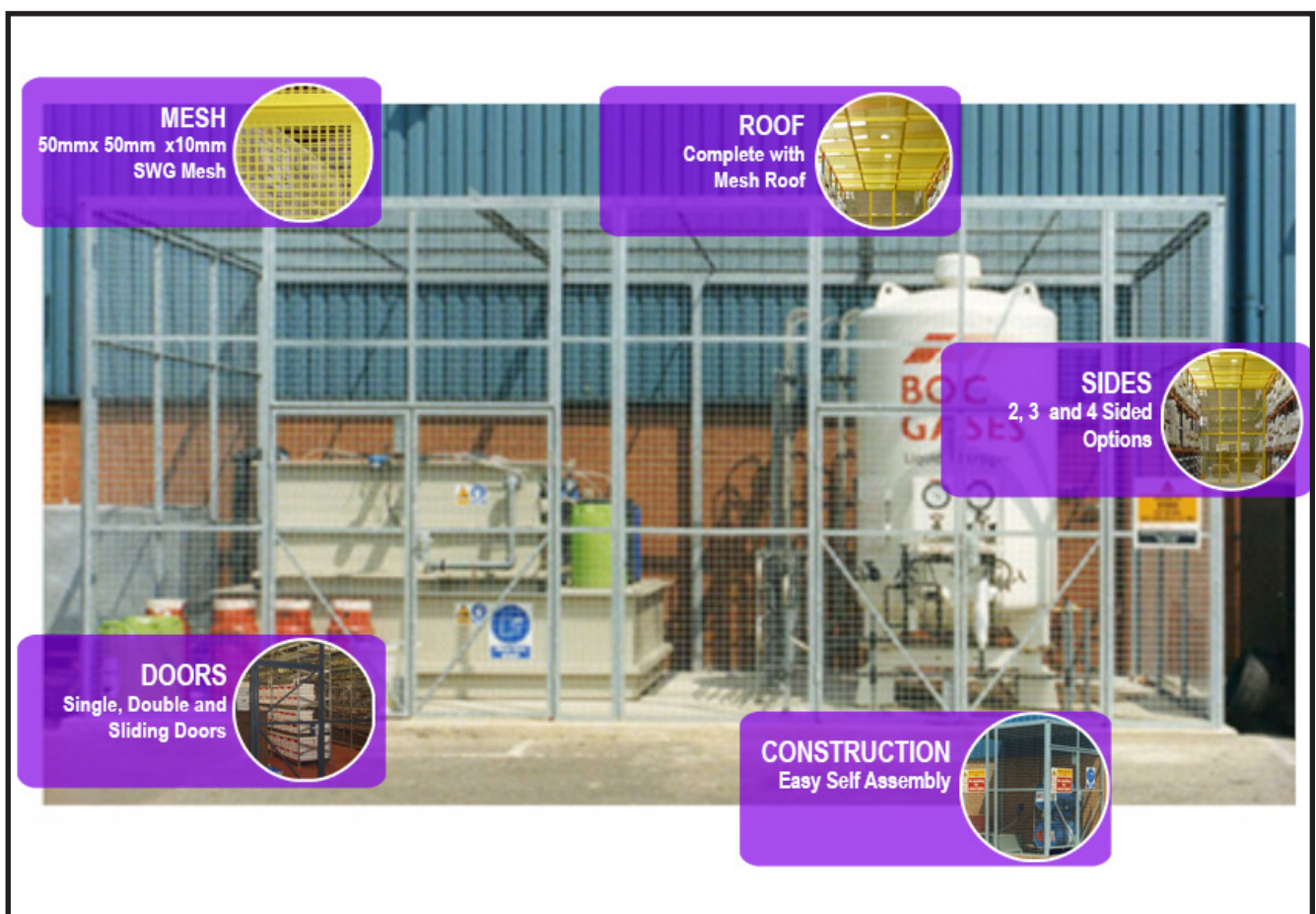
These cages are quick and easy to construct and available with a range of single, double and sliding doors, which can be fitted with most types of locks and latches.

Eurocages are bolted to the floor (from the inside maintaining security). These cages can also be de-mountable and relocated with a minimum of effort.

Standard size cages are designed around a 1220mm wide panel, all cages are 2440mm high however non-standard or bespoke designs are available.

Eurocages are available in 2, 3 and 4 sided cages as well as specified angles. (Please call us for more details)

Supplied with full height lockable doors, fitted with a hasp and staple fitting, no padlock supplied. Doors fitted centralised on width dimension only.



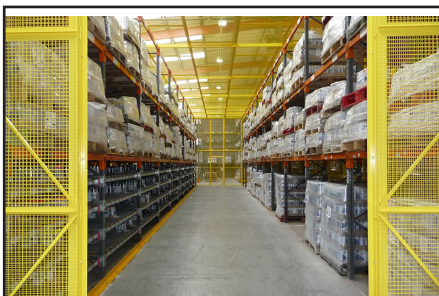
# EUROCAGE External Security Cage

Cage Specifications - Choose from Painted or Galvanised Finish

All Cage Heights are 2440mm

Dimensions (WxD) mm	No of Sides	Powder Finish	Galvanised Finish
2440x1220	2	IPO-001	IPO-005
2440x2440	2	IPO-002	IPO-006
3660x2440	2	IPO-003	IPO-007
4880x2440	2	IPO-004	IPO-008
2440x1220	3	IPO-009	IPO-013
2440x2440	3	IPO-010	IPO-014
3660x2440	3	IPO-011	IPO-015
4880x2440	3	IPO-012	IPO-016
2440x1220	4	IPO-017	IPO-021
2440x2440	4	IPO-018	IPO-022
3660x2440	4	IPO-019	IPO-023
4880x2440	4	IPO-020	IPO-024

Roofs Included



2, 3 or 4 sided cages available



Single, double or sliding doors

